

2017 Annual Meeting of the Florida Society of Neurology



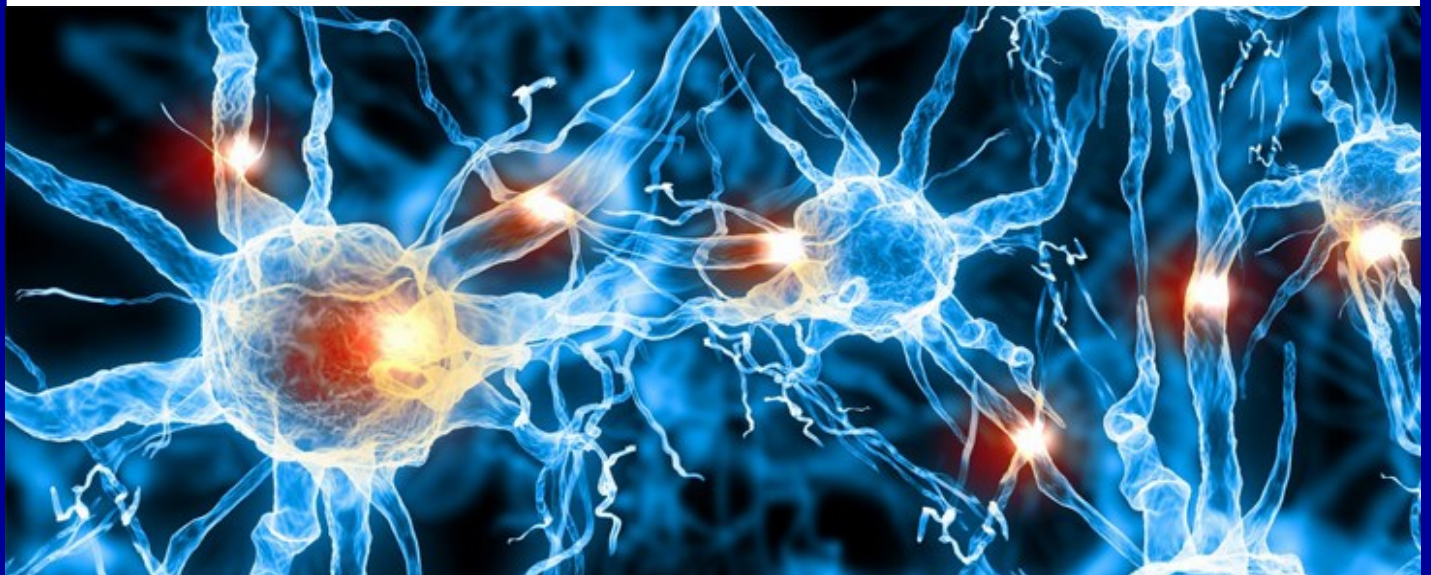
Featuring:

- Neurology Overview & Updates
- The 42nd Annual Course in Neuropsychology and Behavioral Neurology:
Traumatic Brain Injury
- 11th Annual Florida Neurology Resident's & Fellow's Research Day

September 8-10, 2017

Renaissance Orlando at SeaWorld

6677 Sea Harbor Drive, Orlando, FL



The Florida Society of Neurology is pleased to present the 2017 Annual Meeting of the Florida Society of Neurology. This meeting will be held in Lake Buena Vista, Florida, September 8-10, 2017, at the Renaissance Orlando at SeaWorld. The program is a 3 day conference with an fantastic educational tracks being offered. The Florida Society of Neurology is proud to have the following offerings this year:

- Neurology Overview & Updates
- The 42nd Annual Course in Neuropsychology and Behavioral Neurology: Traumatic Brain Injury
- 11th Annual Florida Neurology Resident's & Fellow's Research Day

We are very excited about our 2017 meeting; we invite a wide range of attendees including neurologists, internists, geriatricians, emergency room physicians, neurology physician assistants, nurse practitioners, neurology physicians-in-training (residents and fellows) and other allied health professionals (nurses, speech-language pathologists, physical and occupational therapists, etc). We offer a little something for everybody.

LEARNING OBJECTIVES

At the conclusion of this session, participants will have received current information on a diversity of medical topics pertinent to patient care in Neurology. Subject matter was chosen based upon assessed needs, future trends and relevance to patient care. Many topics were chosen as a direct result of the evaluations from last year's program, the planning committee for the behavioral course, the education workgroup of the Florida Society of Neurology, and the board of the Florida Society of Neurology. At the end of the three parallel sessions:

- ◆ The Florida Neurologist will be updated and will acquire the necessary skills to perform procedures needed in today's practice of neurology, such as EMG, polysomnology, and chemodenervation.
- ◆ The Florida General Practitioner will know how to recognize, localize, and treat common neurological disorders, and gain exposure to the essential neurologic exam and the cognitive examination for higher brain function.
- ◆ The Behavioral Specialist will be updated with the most recent research advances in the field of cognitive and behavioral neurology.
- ◆ The Florida Neurologist-In-Training will have further developed the skills of analytical thinking and appreciate the value of life-long learning, our yearly goal.

LOCATION & HOTEL RESERVATIONS



*Renaissance Orlando at SeaWorld
6677 Sea Harbor Dr.
Orlando, FL*

Immerse yourself in luxury at Renaissance Orlando at SeaWorld®. Our deluxe accommodations and premier location across from SeaWorld® and other famous Orlando attractions inspire unforgettable experiences. Well-appointed guest rooms offer ample space for relaxing and boast thoughtful and comfortable amenities for a sound night's sleep or productive business day. Children can splash around at R Aqua Zone, our on-site waterpark, while adults break a sweat in our state-of-the-art fitness center. Five restaurants, a Starbucks and ice cream shop will please all palates. Pamper yourself in style at the full-service Neu Lotus Spa and enjoy a massage, facial or scrub. Looking to explore Orlando like a local? Ask our friendly Navigator for tips about hidden gems and plan your next big adventure at Renaissance now.

A block of rooms has been reserved for session attendees at a rate of \$129.00 plus tax per night made before August 18, 2017. There are only a limited number of rooms available at this rate, so please make your reservations early. Please note the hotel charges a \$25.00 resort fee. You can choose to opt out, but note the resort fee does include internet access. There is also a \$11.00 per night fee for self parking. (This is a 50% discount from their normal rate.) To make reservations, please call and mention the conference name when making your reservations. Reservations may also be made online here: <https://aws.passkey.com/event/49050403/owner/210/home>.

DISCLOSURE

This educational program has been made possible by unrestricted educational grants from various pharmaceutical companies. A list of faculty disclosures will be provided in the final program.

Meeting Program Director: Irene Malaty, MD

FACULTY

- **Breton Asken, MS, ATC**

Department of Clinical and Health Psychology, University of Florida, Gainesville, FL

- **Maranatha Ayodele, MD**

Assistant Professor of Clinical Neurology, University of Miami, Miami, FL

- **Russell Bauer, PhD, ABPP**

Professor, Dept. of Clinical & Health Psychology, University of Florida, Gainesville, FL

- **Selim Benbadis, MD**

Professor, Departments of Neurology & Neurosurgery, University of South Florida, Tampa, FL

- **Jeffrey Bennett, MD**

Associate Professor, Chief, Neuroradiology, University of Florida, Gainesville, FL

- **Charles W. Brock, MD**

Associate Professor of Neurology, University of South Florida; Chief of Neurology, James A. Haley Veterans Hospital, Tampa, FL

- **Ronald Cohen, PhD**

Professor and Director, Center for Cognitive Aging & Memory Institute on Aging, University of Florida, Gainesville, FL

- **Francis Conidi, DO**

Director, Florida Center for Headache & Neurology, Port St. Lucie, Florida

- **Richard D'Alli, MD**

Associate Professor, Child & Adolescent Psychiatry, University of Florida, Gainesville, FL

- **Duane Dede, PhD**

Clinical Associate Professor, Department of Clinical & Health Psychology, University of Florida, Gainesville, FL

- **Steven DeKosky, MD**

Professor of Neurology, Associate Director, 1Florida Alzheimer's Disease Research Center, University of Florida, Gainesville, FL

- **Kenneth Heilman, MD**

Distinguished Professor of Neurology, University of Florida, Gainesville, FL

- **Michael Jaffee, MD**

Associate Professor of Neurology, University of Florida, Gainesville, FL

- **Anna Khanna, MD**

Assistant Professor & Interim Division Chief, Neurovascular Division, Neurology Department, University of Florida, Gainesville, FL

- **Glenn Larrabee, PhD**

Private Practice, Sarasota, FL

- **Roberto Lopez Alberola, MD**

Assistant Professor of Neurology & Pediatrics, University of Miami School of Medicine, Miami, FL

- **Alberto Martinez-Arizala, MD**

Associate Professor of Neurology, Medical Director, Spine Institute
University of Miami School of Medicine, Miami, FL

- **Augusto Miravalle, MD**

Associate Professor of Neurology, MS Division Chief, University of Florida, Gainesville, FL

- **Stephen Nadeau, MD**

Professor of Neurology, University of Florida, Gainesville, FL

- **Björn Oskarsson, MD**

Co-Director ALS clinic, Mayo Clinic, Jacksonville, FL

- **William Perlstein, PhD**

Associate Professor, Department of Clinical & Health Psychology, University of Florida, Gainesville, FL

- **Adolfo Ramirez-Zamora, MD**

Associate Professor of Neurology, University of Florida, Gainesville, FL

- **Stephen Sutton, DPT**

University of Florida Rehab Center, University of Florida, Gainesville, FL

- **Robert L. Vollbracht, MD**

Private Practice, Clearwater, FL

- **Meredith Wicklund, MD**

Assistant Professor, Department of Neurology, University of Florida, Gainesville, FL

- **John Williamson, PhD**

Assistant Professor, Center for Neuropsychological Studies, Department of Neurology, University of Florida, Gainesville, FL

- **Anthony Yachnis, MD**

Medical Director of Anatomical Pathology, Professor of Pathology University of Florida, Gainesville, FL

Neurology Overview and Updates

Director: Irene Malaty, MD

Research Day Director: Charles Brock, MD

Friday, September 8, 2017

1:00pm-2:00pm	Registration
2:00pm-2:45pm	ADHD Across Ages, <i>Richard D'Alli, MD</i>
2:45pm-3:30pm	Mild cognitive impairment/Dementia- Diagnosis and Management, <i>Meredith Wicklund, MD</i>
3:30pm-4:00pm	Break
4:00pm-4:45pm	Migraine and Approach to Headache, <i>Robert Vollbracht, MD</i>
4:45pm-5:30pm	Neuropathic Pain, <i>Charles Brock, MD</i>
5:30pm-6:15pm	Critical Care Neurology (SAH, elevated ICP, status epilepticus), <i>Mara Ayodele, MD</i>
6:15pm-7:15pm	Welcome Reception

Saturday, September 9, 2017

7:00am-8:00am	Registration & Continental Breakfast
8:00am-8:45am	Acute & Secondary Stroke, <i>Anna Khanna, MD</i>
8:45am-9:30am	Spinal Cord, <i>Alberto Martinez-Arizala, MD</i>
9:30am-10:15am	Hot topic: Medical Marijuana for Epilepsy and Neurology, <i>Selim Benbadis, MD</i>
10:15am-11:00am	Poster Session in Vendor Hall - Refreshments served
11:00am-11:45am	Seizure- Utilizing new and old agents, <i>TBD</i>
11:45am-12:30pm	Autoimmune encephalopathy - Approach to acute and chronic management, <i>Augusto Miravalle, MD</i>
12:30pm-1:30pm	Luncheon in Vendor Hall
1:30pm-2:30pm	Town Hall in Meeting Room Resident Research Platform Presentations in Vendor Hall

Sunday, September 10, 2017

7:00am-8:00am	Registration & Continental Breakfast
8:00am-8:45am	Parkinson Disease Management, <i>Adolfo Ramirez-Zamora, MD</i>
8:45am-9:30am	Myasthenia gravis and ALS, <i>Björn Oskarsson, MD</i>
9:30am-10:15am	Multiple sclerosis: When to initiate treatment, choosing an agent, and when to escalate therapy, <i>TBD (Supported by an educational grant from Celgene)</i>
10:15am-10:45am	Break
10:45am-11:30am	Traumatic brain injury/Concussion, <i>Frank Conidi, DO</i>
11:30am-12:15pm	Zika virus and the nervous system, <i>Roberto Lopez-Alberola, MD</i>

42nd Annual Course in Cognitive & Behavioral Neurology: Traumatic Brain Injury

Director: Kenneth Heilman, MD

Friday, September 8, 2017

7:00am-8:00am	Continental Breakfast & Registration
8:00am-8:15am	Introduction, <i>Kenneth M. Heilman, MD</i>
8:15am-9:00am	The Types, Forms, Frequency and Cost of TBI, <i>Michael Jaffee MD</i>
9:00am-9:15am	Neuropathology of TBI, <i>Anthony T. Yachnis, MD</i>
9:45am-10:15am	Break
10:15am-11:00am	Alterations of Brain Imaging Associated with TBI, <i>Jeffrey Bennett MD</i>
11:00am-11:45am	Alterations in Memory, <i>Glen Larrabee PhD</i>
11:45am-12:15pm	Morning Wrap Up: Q&A, <i>Dr. Yachnis, Bennett, & Larrabee</i>
12:15pm-1:15pm	Lunch Break – On your own
1:15pm-2:15pm	TBI - Post-Traumatic Stress Disorder and Emotions, <i>John Williamson, PhD</i>
2:15pm-3:15pm	Athletic Post-Concussive Evaluation-Return to Play, <i>Duane Dede, PhD</i>
3:15pm-3:45pm	Break
3:45pm-4:45pm	Visuospatial Disorders, <i>Russell Bauer PhD</i>
4:45pm-5:15pm	Afternoon Wrap Up: Q&A, <i>Drs. Williamson, Dede & Bauer</i>
5:15pm-6:15pm	Break – free time
6:15pm-7:15pm	Welcome Reception

Saturday, September 9, 2017

7:00am-8:00am	Registration & Continental Breakfast
8:00am-8:45am	TBI & Disorders of Executive Functions, <i>William Perlstein, PhD</i>
8:45am-9:30am	Disorders of Communicative Function in TBI <i>Stephen E. Nadeau MD</i>
9:30am-10:15am	TBI & Alterations in Attention, <i>Ronald Cohen, PhD</i>
10:15am-11:00am	Poster Session in Vendor Hall - Refreshments served
11:00am-12:00pm	Treatment and Management of TBI, <i>Michael Jaffee MD</i>
12:00pm-12:30pm	Saturday Wrap Up: Q&A, <i>Drs. Perlstein, Nadeau, Cohen, & Jaffee</i>
12:30pm-1:30pm	Luncheon in Vendor Hall
1:30pm-2:30pm	Town Hall in Meeting Room Resident Research Platform Presentations in Vendor Hall

Sunday, September 10, 2017

7:00am-8:45am	Registration & Continental Breakfast
8:45am-9:30am	Chronic Traumatic Encephalopathy, <i>Stephen DeKosky MD</i>
9:30am-10:15am	Anosognosia and Traumatic Brain Injury, <i>Kenneth M. Heilman, MD</i>
10:15am-10:45am	Break
10:45am-11:45am	Action-Intentional Disorders, <i>Kenneth M. Heilman MD</i>
11:45am- 12:15pm	Wrap Up: Q&A, <i>Dr. DeKosky & Heilman, &</i>

Special Traumatic Brain Injury Breakout Session

Open to all attendees (Space limited – RSVP required)

Co-Directors: Kenneth Heilman, MD & Michael Jaffee, MD

Friday, September 8, 2017

7:15pm-7:45pm	Concussion: Definitions, Pathophysiology, and Biomarkers, <i>Breton Asken, MS, ATC</i>
7:45pm-8:15pm	Concussion management: Cognitive Features and Assessment, <i>Russell Bauer, PhD, ABPP</i>
8:15pm-8:45pm	Vestibulo-Ocular Dysfunction in Concussion, <i>Stephen Sutton, DPT</i>
8:45pm-9:15pm	Long-Term Sequelae of Repetitive Head Injury, <i>Stephen DeKosky, MD</i>
9:15pm-9:45pm	Emerging Diagnostic and Management Issues in Concussion, <i>Michael Jaffee, MD</i>
9:45pm-10:15pm	Panel Discussion

CANCELLATION POLICY

Cancellation notification must be made in writing (fax and email are acceptable) and received by August 20, 2017. A cancellation fee of \$25 will be assessed. Cancellations received after August 20, 2017 will not be refunded, nor will “no shows”. Substitutions are welcome without penalty. Please allow up to three weeks after the conference for any refunds.

FSN reserves the right to cancel this activity due to unforeseen circumstances, in which the full registration will be refunded. FSN will not be responsible for travel expenses incurred by participants in the unlikely event that the program is cancelled.

The FSN reserves the right to change or substitute speakers / lectures as necessary.

REGISTRATION

Name and Title

Mailing Address

City State Zip

Daytime Telephone Number

E-mail Address

Which Program would you like to attend? Check one:

Neurology Overview & Updates

The 42nd Annual Course in Neuropsychology & Behavioral Neurology: Traumatic Brain Injury

Special Friday Night Breakout Session (Complimentary with Full Course registration for either track)

Full Course Registration or Half Day Registration

If half day, which session would you like to attend? _____

Which Membership Status are you?

Fellow of the FSN

Active or Emeritus Member of the FSN

Affiliate Member of the FSN

All Others (Non-member)

Amount enclosed or to be charged _____

(See chart on next page.)

Educational Track	Membership Status	Paid by August 8, 2017 *
Neurology Overview & Updates	Fellow of the Florida Society of Neurology	\$200
	Active Members & Emeritus Members of the FSN	\$220
	Affiliate Members of the FSN	\$240
	All Others	\$280
42nd Annual Course in Cogni- tive & Behavioral Neurology: Traumatic Brain Injury	Fellow of the Florida Society of Neurology	\$220
	Active Members & Emeritus Members of the FSN	\$240
	Affiliate Members of the FSN	\$260
	All Others	\$300

***Note: Above prices increase by \$40 on August 9, 2017.**

Trainee / Student Fee, any program \$50.00. Must be signed up by
September 1 or a \$20.00 surcharge will be applied.

Half Day rate of \$80.00 will be available for any educational track.
(No discounts apply to half days.)

Checks, Visa, MasterCard, & American Express are accepted for payment.

Credit Card # _____

Exp. Date _____ CVC # _____

(Please note, in order to process your credit card payment, we need your address and phone number that is associated with your billing address for your credit card. If these are not the same as above, please include this information separately.)

Please send payments to:

The Florida Society of Neurology, P.O. Box 14096, Gainesville, FL 32604

Or register online at :

<http://www.fsneuro.org/index.php/events/annual-meeting>